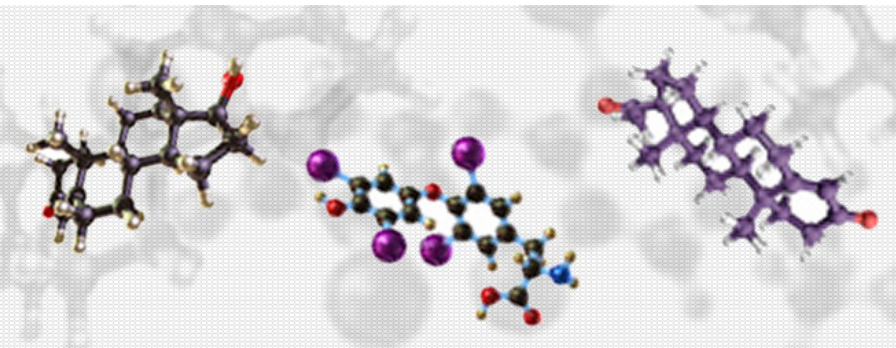




ANNUAL REPORT 2012-2013



WHO WE ARE

The Endocrine Society of Australia (ESA) is a national non-profit organisation of scientists and clinicians who conduct research and practice in the field of Endocrinology.

The society was founded in 1958 and incorporated in 1986 in the State of Victoria. The Society is governed by the eight members of its Council who are elected every two years by a ballot of the membership in accordance with the Constitution.

OUR GROWTH

Our membership continues to grow every year: We currently have 1051 members.

This society is strengthened by its composition of both clinicians and basic science members; and we believe that this true integration of disciplines is one reason for its continued success.

OUR MISSION

The mission of the ESA is to be the premier society in Australia in the field of endocrinology through promoting excellence in research, fostering the integration of clinical and basic sciences, and facilitating the translation of our science to health care and clinical practice.

Key objectives to achieve these goals include the nurturing and developing the future generations of basic and clinical scientists and other health professionals, and the dissemination of new knowledge in endocrinology through our Annual Scientific Meeting and Seminars. The ESA will be proactive in shaping the research and health policies based on scientific advances in our field.

ESA STRATEGIC PLAN

Our vision

To be recognised as the authoritative voice for Endocrinology, Endocrinologists and Endocrine Researchers in Australia and Southeast Asia

Our purpose

To educate about, engage in, and promote clinical practice and research in Endocrinology in the region and world-wide

Our values

To be knowledgeable, accessible, sustainable and committed

Our strategic directions

1. To maintain financial sustainability for the future
2. To promote the education of our current and future endocrinologists and endocrine researchers
3. To listen to our membership
4. To engage with our members, government bodies, funding bodies and the public to address and resolve issues that affect endocrinology and endocrine research
5. To promote the profile of the Endocrine Society of Australia
6. To ensure the governance of the society has continuity of knowledge and expertise

Key areas of Priority

1. Financial Sustainability

Objectives

- 1.1 Achieve a sufficient and more reliable income stream through investments, industry, bequests and conferences
- 1.2 Maintain a productive operating budget
- 1.3 Maintain long term financial sustainability of the scholarship programs

2. Education

Objectives

- 2.1 Provide high quality conferences and meetings that attract international and national interest
- 2.2 Provide support for junior members, both clinical and basic scientists with membership, training, education and scholarships
- 2.3 Support continued training of high quality endocrinologists through work force planning and addressing issues affecting training

3. Internal Engagement: membership

Objectives

ESA STRATEGIC PLAN

3. Internal Engagement: membership

Objectives

- 3.1 Hear the needs of our members
- 3.2 Retain and ensure sustainability of our expertise within the membership
- 3.3 Communicate and engage other endocrine based societies to increase membership both nationally and internationally
- 3.4 Ensure ESA members are assisting ESA to reach its objectives

4. External Engagement

Objectives

- 4.1 Engage consistently with the RACP for endocrinology training, secretariat business and endocrine advocacy
- 4.2 Engage with industry for sponsorship and financial sustainability
- 4.3 Engage with Government for addressing endocrine issues that affect ESA sustainability and profile
- 4.4 Engage with the NHMRC at every possible level to promote the funding of endocrine research, for endocrine advocacy and for the joint production of position statements
- 4.5 Engage with the public via the media to enhance the ESA profile and opportunities for bequests

- 4.6 Increase our presence and effectiveness on other boards and panels of institutions

5. Governance

Objectives

- 5.1 Maintain a highly skilled and motivated board
- 5.2 Source skilled, motivated and committed consultants with clearly defined roles to drive our objectives
- 5.3 Have the right committees with the right people to deliver strategic objectives
- 5.4 Educate board members in governance so our strategic ability and decision making is enhanced

6. Profile

Objectives

- 6.1 Promote Endocrinology within Australia via our branding
- 6.2 Provide education, networking opportunities and showcase our research
- 6.3 Promote our expert members both nationally and internationally
- 6.4 Be recognised as the authoritative voice for endocrinology, rare endocrine disorders and obesity in Australia and the region

PRESIDENT'S REPORT

Once again, the 2013 ESA Annual Scientific Meeting in Sydney was a great success thanks to the efforts of the incoming Programme Organising Committee capably led by Dr. Ann McCormack, and her team Dr Kaye Stenvers (Chair – SRB), Associate Professor Chris Ormandy, Associate Professor Rory Clifton-Bligh, Dr Sue Mei Lau and Dr Paul Baldock. The invited international speakers were outstanding with Professor Matthew During, from Ohio State University, delivering his very sophisticated and pioneering research into the effects of environmental enrichment on energy balance and tumour growth in his Harrison Lecture. Professor Anthony Hollenberg from Harvard Medical School delivered a superb Taft plenary on the mechanisms of thyroid hormone action. Dr. Mark Gurnell from Cambridge University complemented this by presenting an exciting new syndrome of resistance to thyroid hormone in his clinical plenary, as well as a stimulating symposium on primary aldosteronism. Both Professor Hollenberg and Dr Gurnell were also highly appreciated and active participants in the preceding Clinical Weekend.

Congratulations go to the ESA Senior Plenary awardee for 2013, Professor Geoffrey Tregear, for his patience and

persistence in unraveling the clinical application of relaxin over three decades. Dr Zane Andrews received the ESA Mid Career Award for his work on the role of ghrelin and metabolic status. The Novartis Junior Scientist was awarded to Tao-Kwang Kevin Lee, and the Bryan Hudson Clinical Endocrinology Award to Emily Gianatti from extremely competitive fields. The 2013 ESA Servier Award was given to Chi Yi Lo for her published work on RAB-Like 2 in male fertility.

Regarding international scientific meetings, Professor Leon Bach continues to be the ESA representative on the International Society of Endocrinology. I was the ESA representative on the ICE/ENDO 2014 Annual Meeting Steering Committee meeting in Reston, Virginia, USA in August and together with Associate Professor Kristy Brown from SRB, we were able to get several Australians on the Programme, either as Symposia speakers or in Meet-the-Professor sessions, representing the fourth largest national group. I have also accepted a position on the ENDO Annual Meeting Steering Committees for 2015-2017 with the aim of increasing Australian content.

PRESIDENT'S REPORT *continued...*

ESA is certainly in sound financial and scientific shape meaning we are able to offer ESA Postgraduate Scholarships and Fellowships. Our total net assets have increased from \$1,208,324 to \$1,858,300. This large increase has predominantly been due to the addition of the generous benefaction from the estate of ESA Founder, Dr Ken Wynne, of \$541,320, which has been "ring-fenced" and invested to provide an annual \$25,000 Ken Wynne Memorial Scholarship. I am also trying to leverage additional clinical research funds by forming a partnership with the RACP Research and Education Foundation.

You may have recently received an invitation to participate in the NHMRC grant review process as either a GRP member or Academy member. I would encourage you to accept to support the discipline of Endocrinology. It is critical for the success of our discipline that we all participate in this critical peer-review process, particularly with an overall success rate of 16.9% this year.

Our strategic plan for ESA has progressed with a new ESA logo and website. Our 2013 Annual Report will soon be completed and the ESA manual for ESA Board members has been

comprehensively revised. We plan to continually update ESA position statements on our website for reference by both health professionals and the public. ESA Council recently approved a 2-year trial partnership with the Wiley Blackwell scientific Journal, Clinical Endocrinology, which allows free publishing of ESA abstracts in the Journal, free on-line access to the Journal and free page costs for ESA members. This partnership has increased the international exposure of our Society, as our new ESA logo has appeared on the Journal cover since October this year. In another agreement, ESA members also benefit from ESA's new collaboration with other leading societies worldwide and Bioscientifica, a not-for-profit subsidiary of the Society for Endocrinology. ESA members are eligible for a special discounted publishing fee when publishing case reports in the open access publication, Endocrinology, Diabetes & Metabolism Case Reports (submit online via www.edmcasereports.com).

The parallel Basic Science Weekend continues to evolve and the ESA Seminar Weekend, targeted towards early career researchers, in April 2013 had its largest attendance ever with Professor Dolores Shoback from the University

PRESIDENT'S REPORT *continued...*

The parallel Basic Science Weekend continues to evolve and the ESA Seminar Weekend, targeted towards early career researchers, in April 2013 had its largest attendance ever with Professor Dolores Shoback from the University of California San Francisco (a plenary speaker for ICE/ENDO 2014) being an incredibly engaging and popular international speaker. Associate Professors Don McLeod and Belinda Henry are the Clinical and Basic Co-Chairs, respectively, for the 2014 ESA Seminar Meeting. Sincere thanks go to Dr. Rosemary Wong for her tremendous leadership over the last three years of the Clinical stream. Associate Professor Shane Hamblin will be organising the 2014 ESA Clinical Weekend, while Associate Professor Mathis Grossman is Chair of the 2014 Local Organising Committee.

I look forward to working with you all to advance the ESA over the next year and I thank all of ESA Board members, Committee Chairs for 2014 for their time as well as their expertise in making the ESA a truly great Society.



Professor Peter R. Ebeling (President)



Prof Peter Ebeling (President)
Chair, NorthWest Academic Centre
The University of Melbourne
Room 5.017, Level 3
Western Centre for Health Research and Education
Western Health, PO Box 294, 176 Furlong Road
St Albans. Vic. 3021
Ph: 613 8395 8065
Fax: 613 8395 8258
Email: peterre@unimelb.edu.au



Professor Helena Teede (President-elect)
Director Monash Centre for Health Research and
Implementation & Head Women's Public Health
Research - School of Public Health & Preventive
Medicine, Monash University
Head of Diabetes and Vascular Medicine Unit –
Monash Health
Ph (613) 9594 7545
Fax (613) 9594 7550
Email: helena.teede@monash.edu



A/Prof Warrick Inder (Treasurer)
Senior staff specialist (Endocrinology)
Department of Diabetes and Endocrinology
Princess Alexandra Hospital
Ipswich Rd
Woolloongabba QLD 4102
Phone: +61 7 3176 2295
Fax: +61 7 3176 2973
Email: warrick_inder@health.qld.gov.au



Prof Bu Beng Yeap
School of Medicine and Pharmacology
Level 2, T-Block
Fremantle Hospital
Fremantle. WA. 6160.
Ph: +61 8 9431 3229
Fax: +61 8 9431 2977
Email: byeap@cyllene.uwa.edu.au



A/Prof Timothy Cole (Secretary)
Department of Biochemistry & Molecular
Biology,
Bld 76, level 3,
Monash University, Vic, 3800,
Ph: +61 3 9902 9118
Fax +61 3 9902 9500
Email: tim.cole@monash.edu



Associate Professor Ashim Sinha
Director of Diabetes and Endocrinology
Cairns Hospital and Diabetes Centre
PO BOX 902, Cairns. QLD. 48710
Ph: 07 42264661
Fax: 07 42264666
Email: ashim.sinha@health.qld.gov.au



Dr Morton Burt
Southern Adelaide Diabetes and
Endocrine Services
Repatriation General Hospital
Daw Road, Daw Park. SA. 5041
Ph (08) 82751094
Email: morton.burt@health.sa.gov.au



Dr Belinda Henry
Department of Physiology, Building 13F
Monash University
Wellington Road
Clayton. VIC. 3800.
Ph: 03 9905 2500
Fax: 03 9905 2547
Belinda.henry@monash.edu



Prof Chen Chen
Chair of Endocrinology and NHMRC PRF
School of Biomedical Sciences
Room 409A, Sir W. MacGregor Building 64
The University of Queensland
St Lucia, QLD. 4072
Ph: 07 3365 3856
Fax: 07 3365 2398
Email: chen.chen@uq.edu.au



ESA Secretariat
Executive Officer
Mrs Ivone Johnson
145 Macquarie Street
Sydney, NSW. 2000.
Ph: +61 2 9256 5405
Fax: +61 2 9251 8174
Email: ijohnson@endocrinesociety.org.au



Dr Nicolette Hodyl (Newsletter editor)
The Robinson Institute
School of Paediatrics and Reproductive
Health
The University of Adelaide
77 King William Road
North Adelaide 5006
Ph: +61 8 8313 1303
Fax: +61 8 8313 0010
Email: nicolette.hodyl@adelaide.edu.au



Administrative Assistant
Mrs Melissa Dupavillon
145 Macquarie Street
Sydney, NSW. 2000.
Ph: +61 2 9256 5405
Fax: +61 2 9251 8174



Associate Professor Vicki Clifton
(Past President)
Robinson Institute, University of Adelaide
Lyell McEwin Hospital
Haydown Rd
Elizabeth Vale SA 5112
Phone 618 81332133
Fax 618 8182 9337
Email: vicki.clifton@adelaide.edu.au

ESA SEMINAR WEEKEND (CLINICAL)

APRIL 5-7, 2013 ESA SEMINAR

Novotel Twin Waters, Sunshine Coast

A stimulating and highly successful Seminar Weekend was held at Novotel Twin Waters, Sunshine Coast, April 5-7, 2013, at which we had a record attendance of 280. This was the final in a three-year cycle during which the Endocrinology curriculum is covered. Our international speaker, Professor Dolores Shoback, UCSF, presented the Plenary Lecture on *"Osteoporosis: Hot Topics"*, and provided expert comments, alongside Prof Peter Ebeling, on fascinating Metabolic Bone Cases in a Masterclass, a new format we introduced last year.

Once again, the Registrars' Quiz which we introduced in 2011, was very well received and there were valuable prizes awarded. Congratulations to Western Health, Melbourne, for having their Registrar (Dr Hahn Nguyen, 2013; Dr Anne Trinh, 2012; Dr Fiona Bodey, 2011) win first prize for the third consecutive year!

Another initiative we launched in 2011 was the 'Endocrinology & Society Lecture', which was given this year by academic cognitive neuropsychologist, A/Prof Cordelia Fine from the Melbourne Business School. She gave a thought-provoking, humorous and inspiring lecture based on her acclaimed book, *'Delusions of Gender: The Real Science Behind Sex Differences'*.

Two events were collaboratively undertaken with the Basic Science Stream: a Lecture given by Prof Shoback titled, *"The Calcium-Sensing Receptor in Health and Disease"*; and an extremely well-received Debate titled, *"You're fat; it's your fault"* with debaters Dr Spiros Furlanos and Prof Brian Oldfield for the proposition, and Prof Michael Cowley and

Dr Mark Daniels (from Oregon Health Sciences University, USA) for the opposition. We also had talks of outstanding quality from other local experts.

As I conclude my 3-year role, I am delighted that our new initiatives of having an international speaker, and diverse program formatting have seen the meeting strengthen in quality and numbers. I would like to thank the POC (listed below) and ASN Events, particularly Jim Fawcett and Mike Pickford for their excellent work and our new ESA President, Prof Peter Ebeling for his strong support of this meeting with his presence and multi-faceted participation.



Ada Cheung
Mathis Grossmann
Mark Ng-Tang Fui
Duncan Topliss

Rosemary Wong (Chair, Clinical)

ESA SEMINAR WEEKEND (BASIC)

APRIL 5-7, 2013

Novotel Twin Waters, Sunshine Coast

In 2013, Clinical stream weekend highlighted the theme of Bone and the Basic Science Stream incorporated the theme Endocrine Control of Obesity and Metabolism. Overall this was again a highly successful weekend with over 275 registrants. Of these there were 200 clinical registrants and 40 basic scientists. The delegate feedback was outstanding for both the clinical and scientific programs.

We would like to thank our International speakers Prof Dolores Shoback (Clinical) and Prof Daniel Marks (Basic Science), who provided an outstanding contribution to both programs. In addition, the basic science team thank Prof Matthew Watt who delivered a fantastic plenary on 'omics' approaches to studying the metabolic secretome.

Both the basic science and clinical programs came together for two sessions that included a plenary lecture by Prof Dolores Shoback and a debate entitled "It's your fat, it's your fault".

The 'for' side was tackled by Spiros Furlanos and Brian Oldfield and the 'against' side by Daniel Marks and Iain Clarke. The debate proved to be an entertaining and informative highlight of the Seminar weekend.

In addition, the Clinical stream ran the popular registrar quiz on Saturday afternoon. The basic science stream ran an early career three minute thesis competition where 10 recipients received travel awards to attend the ASM. Congratulations to each of the recipients.

I would finally like to thank Rosemary Wong and her team for their exceptional work and tireless effort in running the Seminar weekend over the past 3 years.



Chen Chen
Tim Cole
Nicolette Hodyl

Belinda Henry (Basic Science Chair)

ESA ANNUAL SCIENTIFIC MEETING 2013

26-28 August 2013, Sydney

The 2013 annual scientific meeting was a huge success with attendance at record levels! Following on from a very enjoyable and educational clinical weekend, Professor Anthony Hollenberg from Harvard Medical School delivered a superb Taft plenary on the Monday morning. His lecture was of interest to basic scientists and clinicians as he brought us up to date on the mechanisms of thyroid hormone action. This became a wonderful prelude into the outstanding clinical plenary given by Dr Mark Gurnell from Cambridge University who presented us with an exciting new syndrome of resistance to thyroid hormone. Mark Gurnell also delivered a wonderful symposia talk entitled "Primary aldosteronism – a new trick for an old Conn". The Harrison plenary lecture this year was also outstanding. Professor Matthew During, from Ohio State University, captivated us with his very sophisticated and pioneering research into the effects of environmental enrichment on energy balance and tumour growth. In a subsequent symposia talk, Matthew During went on to provide us with an elegant translational angle to his

research discussing gene transfer into the hypothalamus as a new treatment for obesity.

The ESA Senior Plenary for 2013 was awarded to Professor Geoffrey Tregear for his lifetime of work unravelling the clinical application of the lesser known hormone, relaxin. Dr Zane Andrews received the ESA Mid Career Award for his work on the role of ghrelin and metabolic status. As in previous years, both the Novartis Junior Scientist and Bryan Hudson Clinical Endocrinology Awards were extremely competitive. Congratulations to award recipients Tao-Kwang Kevin Lee (Novartis) and Emily Gianatti (Bryan Hudson)! The 2013 ESA Servier Award was given to Chi Yi Lo for her published work on RAB-Like 2 in male fertility.

With some fine tuning, we were able to include an extra couple of clinical symposia into this year's program which was met with much enthusiasm from the clinical members of ESA. Symposia on up to the minute topics in the adrenal and thyroid fields were featured, along with a symposia on the "Abuse of Hormones" and an entertaining debate entitled "This House Believes that Measurement of Vitamin D is Over-Rated". In the basic science stream, excellent

ESA ASM 2013 *continued*

presentations were given on the themes of “Hypothalamic-Adipocyte-Bone Axis”, “Fetal Programming” and an exploration into everything “Beyond the Gene”. Clinicians and scientists were able to come together in translational symposia discussing new and old hormones as well as lipid research and new treatments.

As in previous years, both the clinical and basic science Meet the Professor Sessions were well attended and for early career researchers and trainees there was the opportunity to participate in career breakfast sessions. I would like to thank the program organising committee for their wonderful assistance in putting together this year’s meeting: Rory Clifton-Bligh, Amanda Sainsbury-Salis, Paul Baldock, Sue Mei Lau and Chris Ormandy. It was also wonderful to have the support and guidance of the SRB Co-Chairs Kaye Stenvers and Rebecca Robker, and the Local Organising Committee chaired by Charles Allan, in helping to make the joint meeting so successful.

Finally, thanks to Ivone Johnson at ESA and Mike Pickford and his team for much behind-the-scenes work, an absolutely vital framework to make these meetings work. For those who didn’t attend the conference dinner – make sure you do next year – the band was fantastic! Look forward to another great meeting in Melbourne in 2014.



Ann McCormack,
POC Chair

ESA CLINICAL WEEKEND 2013

This year's ESA Clinical Weekend was held at one of Sydney's favourite seaside destinations, the Novotel Hotel, in Manly NSW from 23-25 August 2013. It was attended by over 300 registrants.

The program followed the successful format of previous years, featuring presentations of clinical cases by Advanced Trainees in an interactive small group setting, focusing on the areas of thyroid and pituitary endocrinology. All cases were of high quality and Dr Ailie Connell from Melbourne was awarded the prize for the best presentation for her delivery of "An Unusual Case of Hyperthyroidism".

Our international speakers Professors Anthony Hollenberg and Mark Gurnell delivered superb Plenary Lectures, with direct relevance to the cases presented at the rest of the meeting. They also actively participated in the acromegaly, pituitary and thyroid presentation sessions, providing expert comments and helpful clinical pointers.

ESA Clinical Weekend 2013 Co-Chairs



Katherine Benson



Jerry Greenfield



Lyndal Tacon

CONGRATULATIONS TO ESA NEW LIFE MEMBERS 2012



Garry Warne



Roger Smith



Evan Simpson

THE NEW ESA KEN WYNNE MEMORIAL POSTDOCTORAL RESEARCH AWARD



ESA has great pleasure in announcing the formation of a new research award made possible by a generous bequest from the Estate of the late Kenneth Wynne, a founding member of ESA. An award of \$25,000 will be made annually to an ESA member up to 10 years post PhD or MD for endocrinology research in the field of 'lipid hormone function, lipid metabolism or the metabolic regulation of human endocrine disorders'

VALE PROFESSOR DAVID LINDSAY HEALY

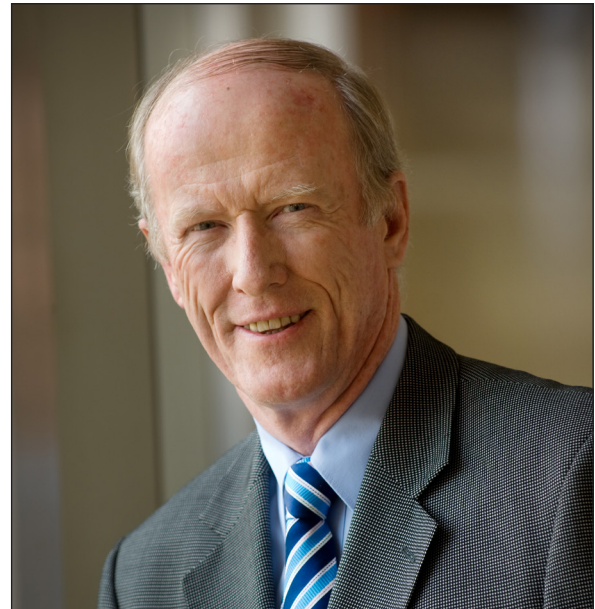
BMedSci MBBS (Hons) PhD FRANZCOG FRCOG CREI

Professor David Healy

Chairman of the Department of Obstetrics and Gynaecology, Monash University, passed away from cancer on 25th May 2012, aged 63.

David was a distinguished Monash alumnus who was a passionate champion for women's reproductive rights in Australia and overseas. His leadership, vision and persuasiveness will be dearly missed by all who were fortunate to know him.

From his high school days in Murrumbeena in Melbourne, David stood out from the crowd. The youngest of his siblings, it was clear to his family that David was destined for a life of achievement. Gaining a scholarship to study medicine at the very new Monash University, David excelled as an undergraduate, graduating with a BMedSci (Hons) in 1971 and a MBBS (Hons) in 1973. It was perhaps his PhD (1979), on Human Prolactin Physiology that he undertook with Henry Burger at Prince Henry's Hospital in Melbourne,



VALE PROFESSOR DAVID LINDSAY HEALY

BMedSci MBBS (Hons) PhD FRANZCOG FRCOG CREI

that probably shaped David's subsequent career as a clinician scientist. With Burger's mentorship and support, David won a highly prestigious NHMRC Applied Health Science Fellow allowing him to gain further research training overseas at the National Institute of Health's Pregnancy Research Branch in Bethesda, Maryland, USA and then at the MRC Centre for Reproductive Biology, Edinburgh.

In 1985 he returned to Australia as a young specialist obstetrician and gynaecologist, taking up an appointment as a consultant at the Queen Victoria Medical Centre in Melbourne and as a Senior Lecturer with Monash University's IVF Program under the university's inaugural professor of obstetrics and gynaecology, Carl Wood. The remainder of David's career was with Monash University where, in due course, he would shape obstetrics and gynaecology research and training. In those early days on his return to Australia David continued to excel academically, becoming the first obstetrician and gynaecologist to be awarded a Wellcome Trust Senior Clinical Research Fellowship. With the Fellowship he launched into a reproductive research program including

antiprogesterones, inhibins in reproduction, relaxin in pregnancy, and in GnRH analogues for IVF. Reproductive medicine and outcomes of assisted reproduction remained his major research interests for the remainder of his career. Most recently, David was a very vocal advocate for changing IVF practice to improve pregnancy outcomes and future child health, lifting the industry out of its obsession with pregnancy rates per se.

In 1990, David was awarded a Chair at Monash University, following Carl Wood as Chairman of the Department of Obstetrics and Gynaecology in 1994, a position he held until his untimely passing. Under David's leadership his Department grew in size and strength, becoming the top ranked department of O&G of the Group of Eight universities. He was particularly passionate about growing and nurturing clinician scientists, always making room for the next generation and, as he would often say, "the future". In his role as Chairman of the Research Foundation of the Royal Australian and New Zealand College of Obstetricians and Gynaecologists, he grew the Foundation

VALE PROFESSOR DAVID LINDSAY HEALY

BMedSci MBBS (Hons) PhD FRANZCOG FRCOG CREI

to specifically generate funds to support young clinicians as they began their own research careers. Countless successful academic obstetricians and gynaecologists, and a good few endocrinologists, owe their beginnings to David.

In his own right, David was a highly regarded and respected clinician scientist, nationally and internationally. He published over 250 peer-reviewed papers and was a frequently sought speaker at national and international meetings. In 2002, he was awarded an Honorary Fellowship of the Royal College of Obstetricians and Gynaecologists, UK and since 2010 served as the President of the International Federation of Fertility Societies (IFFS), an organisation of 59 member countries and around 40,000 doctors and other health professionals. He enjoyed this role enormously, engaging his legendary persuasiveness and thriving in the challenge of bringing disparate interests together to meet the common reproductive needs of women worldwide. He was a fierce advocate for women, at times putting his own life at risk to bring RU-486 into Australia. He would recount those events with a zeal that listeners could be forgiven for thinking that they

had occurred only the day before. His commitment to women's health led him, with colleagues, to form the Jean Hailes Foundation where he remained a Founding Board Member until his death.

David will be most fondly remembered as an inspiring teacher and mentor. His vision and leadership were matched only by his integrity and his kindness to all who were privileged to meet him. He will be dearly missed. He is survived by his children Meagan and Ross, and by two grand children.

**Prof. Euan Wallace,
Department of Obstetrics and Gynaecology,
Monash University**

TREASURER'S REPORT

This report deals with the financial year 2012-13.

Full details can be found in the minutes of the AGM at the end of this report.

Revenue increased by 54%, but this was due to a large bequest of \$528,215 from the estate of former life member Ken Wynne. Income from membership subscriptions fell significantly by 16.6% from \$80,765 to \$67,324. Proceeds from meetings were down 17.3% compared to 2011-2012. The combined scientific meeting is less profitable when combined with SRB compared to APEG, largely due to differences in pharmaceutical company revenue, while the addition of a basic science stream to the seminar meeting and funding of an overseas speaker for this meeting has markedly reduced profits but broadened the applicability to members and strengthened the science.

The funds managed by Asgard have returned a net increase in value for the financial year from \$706,646.25 (July 1, 2012) to \$808,577.76 (June 30, 2013). As of August 19, 2013, there has been a further increase in value to \$838,392.96. Funds from the Wynne estate have been invested in a separate account with Asgard. This is structured conservatively at 30% cash/fixed interest and 70% growth assets. As of August 19 2013, the value of this investment is \$541,320.29. Our aim is to make at least a 5% return on this investment annually which will fund a \$25,000 scholarship annually without encroaching on the principal.

Expenditure was higher in 2012-13 compared to the previous financial year by 3.8%. Meeting costs were less, but award costs higher. Secretariat costs have risen and we are now paying rent to the RACP for premises, shared with ADS and ANZBMS.

We are again offering one research higher degree scholarship (value \$20,500) and one post-doctoral award (value \$25,000) for 2014. Applications close on October 31st 2013. The awards are for one year at the recommendation of the Finance sub-committee. In addition, we are offering a \$25,000 Ken Wynne Memorial Scholarship – details to follow.

Progress has been made on the ESA / APEG proposal to the PBAC regarding the funding of growth hormone for adults with proven GH deficiency. A full literature review has been undertaken and the committee feels there is sufficient evidence of benefit to proceed with an application. A meeting with the relevant Pharmaceutical companies has been arranged for Monday August 26th. Cost effectiveness analysis is required before any formal submission is undertaken. A total of \$3511 was spent by ESA in the last financial year towards this.

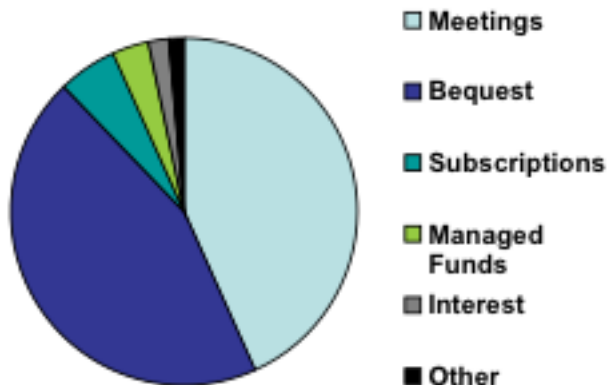


Overall therefore the Society posted a net profit of \$554,795, but allowing for income received from the Wynne estate, operating profit was \$26,580. Our total net assets have increased from \$1,208,324 to \$1,858,300.

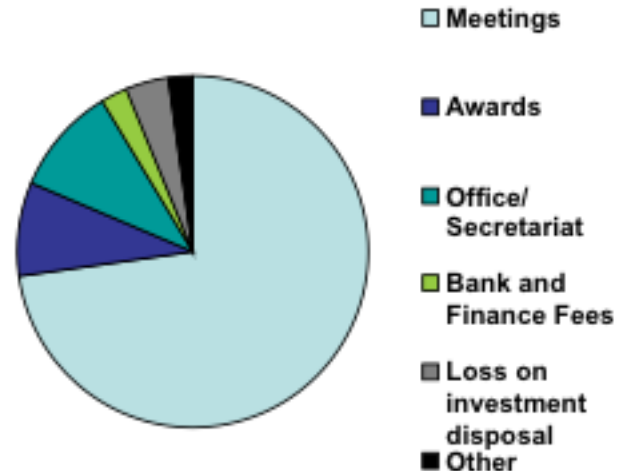
Dr Warrick Inder

ESA Income and Expenditure 2012-13

Income



Expenditure



2012 ESA AWARD WINNERS

As usual, the competition for the annual ESA awards was fierce in 2012-13, with a very high standard of applications received by the society. We congratulate all award recipients on their success.

ESA Senior Plenary Award

Gail Risbridger

Mid Career Award

Emma Duncan

Servier Award

Priya Sumithran

Novartis Award

Patrick Candy

Bryan Hudson Clinical Endocrinology Award

Caroline Jung

ESA/IPSEN International Travel Grant

Christopher Yates, Dana Briggs, Shyuan Ngo
and Sarah To

WE / ESA Australian Women in Endocrinology (AWE)

Lily Huang
Kara Britt

ESA Postdoctoral Award

Kelly Walton



ESA Research Higher Degree Scholarship

Tilenka Thynne



2012 ESA AWARD WINNERS

ESA Senior Plenary Award



Gail Risbridger

This award recognises an outstanding research career in the field of Endocrinology in Australia.

ESA Servier Award



Priya Sumithran

The Servier Award is made annually to recognise the best scientific paper published in the 12-month period preceding the closing date for abstracts for the Annual Scientific Meeting by an active member of the Endocrine Society of Australia early in their career.

I thank the ESA and Servier for the 2012 ESA Servier award, which I received for the paper “Long-term persistence of hormonal adaptations to weight loss”, published in the New England Journal of Medicine in October 2011 (365:1597-604), co-authored by Luke Prendergast, Elizabeth Delbridge, Katrina Purcell, Arthur Shulkes, Adamandia Kriketos and Joe Proietto.

The paper resulted from my PhD research at the University of Melbourne (Austin Health) under the supervision of Professor Joe Proietto, which focused on investigating hormonal mechanisms which may contribute to weight regain after weight loss. In a clinical study involving 50 overweight or obese volunteers, we found that diet-induced loss of 14% body weight led to alterations in the release of several gastrointestinal and adipocyte appetite-mediating hormones (including leptin, ghrelin, cholecystokinin and PYY), in a direction which encourages regain of lost weight. The participants’ appetite ratings also increased after weight loss. The novel finding reported in this paper was that most of the alterations in hormones and appetite persisted 12 months after initial weight loss, even after the onset of weight regain. This may partly explain why the maintenance of weight loss

is so difficult, and suggests that for some people, long-term treatment strategies to counteract these changes may be required to prevent weight regain.

The research was supported by an ESA research scholarship (2007-2009), the Royal Australasian College of Physicians Shields research entry scholarship (2007), and an NHMRC project grant (508920).

Priya Sumithran

Novartis Award 2012



Dr Patrick Candy

I very much appreciate Novartis and the ESA gifting me the Novartis Award in acknowledgement of my presentation at the ESA's 94th Annual Meeting on the Gold Coast in 2012.

The ESA-Novartis Junior Scientist Award is given for the best presentation at the Annual Scientific Meeting by an advanced trainee or a person enrolled for a higher degree (PhD, MD, FRACP).

This presentation showcased part of my PhD research that sought to identify novel clinical and functional roles for nuclear receptor coregulator SLIRP, RAR α and the Notch signalling pathway in colorectal cancer, the Western world's second leading cause of cancer death. This study established SLIRP as a biomarker of higher survival in patients with colorectal cancer, which suppressed oncogenic phenotypes, and inhibited RAR α and Notch signalling. Furthermore, I showed this tumour Notch signalling suppressed by SLIRP, in part through RAR α , was strongly associated with poorer patient survival when undergoing 5-FU chemotherapy. This suggests activation of SLIRP, and/or targeted disruption of RAR α and Notch signalling, may increase tumour chemosensitivity and thereby reduce mortality of this disease.

Overall, this conference was an amazing opportunity to present data in an international forum to leaders in the field of endocrinology, as well as network with fellow members.

I am grateful for this experience and look forward to pursuing future endocrine research.

Dr Patrick Candy

ESA Mid-Career Award



Emma Duncan

The Mid-Career Researcher Award is designed to recognise an outstanding mid-career researcher in endocrinology.

It was a great honour to receive the Endocrine Society of Australia mid-career award for 2012. I have been lucky enough to be involved in genetics at a time of enormous technological and analytical progress with consequent major breakthroughs in common diseases such as osteoporosis and in rare diseases such as skeletal dysplasias. I have been very privileged to work in some excellent centres, including the Wellcome Trust Centre for Human Genetics in the UK and more recently the University of Queensland Diamantina Institute here in Brisbane. I would like to thank my team for all their hard work in unravelling the genetics of complex diseases and of Mendelian disorders.

In the next decade there will be a frameshift in medicine brought about by the genetics revolution. Whether we like it or not, our own personal medical practice will change as a consequence. There are huge challenges accompanying this, not least of which is the requisite upskilling of the medical community. There are also ethical and legal ramifications, with little effort by various Australian governments to date to articulate these challenges and plan solutions. I hope that in my talk I was able to highlight this urgent debate to the Australian endocrine community.

This year, the community chaired by Simon McKeon released their report into the future of medical research in Australia, emphasising that breakthroughs in research will be a major means of meeting the burgeoning health demands of an ageing population with its (not unreasonable) expectations of high-tech state-of-the-art care. Thus the ESA is to be congratulated in its efforts to promote high quality and meaningful research by our basic and clinical researchers, through emphasis on research at our annual scientific meeting and through the provision of awards such as this. Thank you very much.

Emma Duncan

2012 Bryan Hudson Award



Caroline Jung

The Bryan Hudson Clinical Endocrinology Award will recognize the best clinical research presentation at the Annual Scientific Meeting by an active member of the Endocrine Society of Australia early in their career.

I was the recipient of the Bryan Hudson Award in 2012 for the presentation “Plasma, salivary and urinary cortisol levels following physiological and stress doses of hydrocortisone.” This study was part of my PhD conducted at St Vincent’s Hospital in Melbourne.

Hydrocortisone is the standard replacement therapy for patients with adrenal insufficiency. Additional glucocorticoid doses are required during surgery or medical illness in hypoadrenal patients, but there is no universally accepted regimen for glucocorticoid supplementation therapy. This study evaluated cortisol profiles in plasma, saliva and urine following physiological (20 mg oral) or stress (50 mg intravenous) doses of hydrocortisone in dexamethasone-

suppressed healthy subjects, compared to endogenous cortisol levels. We found that a morning dose of hydrocortisone 20 mg is excessive for routine maintenance, while stress doses above 50 mg 6-hourly would rarely be necessary in acute cortisol deficiency. Salivary and urinary cortisol may provide useful alternatives to plasma cortisol measurements to monitor glucocorticoid replacement in hypoadrenal patients.

Presenting this study at the Bryan Hudson Award session was one of the highlights of my PhD, and I am grateful to the Endocrine Society of Australia for this award. I wish to acknowledge my PhD supervisor, A/Prof Warrick Inder, and other co-authors of this study. I wish to thank the University of Melbourne for providing the Australian Postgraduate Scholarship and St Vincent’s Hospital for a research grant.

ESA/IPSEN TRAVEL AWARD



Shyuan T Ngo

To support younger members of the society to travel to international meetings, laboratories and/or clinics to further their training and knowledge in Endocrinology

In 2012, I received support from the ESA in the form of an ESA/IPSEN travel award. This generous award supported my attendance at two

conferences (in France and Germany), and provided me with the opportunity to visit two leading French laboratories relevant to my research interests.

My current research focus assesses the role of the defective energy metabolism in the development and progression of motor neurone disease, a fatal adult onset neurodegenerative disease. Investigation into metabolic defects in motor neurone disease is a research niche that I am striving to develop in Australia. The ESA/IPSEN travel award has played an integral role in my ongoing aspiration to achieve this goal, and my overall development as a research scientist.

I attended the 38ème colloque de la Société de Neuroendocrinologie in Banyuls in the Pyrénées-Orientales of Southern France.

My next stop was Professor Jacques Epelbaum's laboratory at the Centre for Psychiatry and Neuroscience in Paris. Professor Epelbaum is a world leader in neuroendocrinology and a close collaborator to our laboratory at UQ. My visit to Professor Epelbaum's laboratory was exceptionally educational, and it provided me with the chance to advance my knowledge in the field, and to translate experimental expertise between Australia and France.

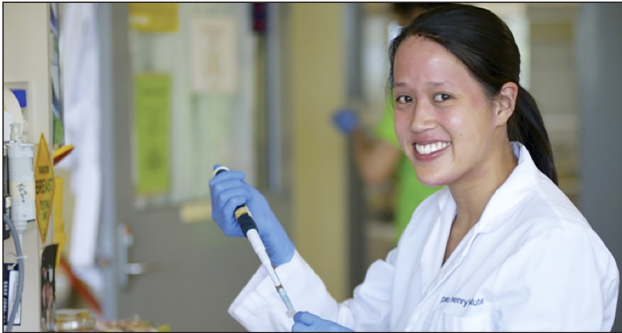
From Paris, I continued to The 6th International Congress of the GRS and IGF Society in Munich. The scientific program was outstanding and boasted research from leading GH/IGF-1 researchers including Dr John Kopchick, Professor Derek Le Roith, and others.

The final stop for me was Dr Jean-Philippe Loeffler's laboratory in Strasbourg. Dr Loeffler is the world leader in investigating metabolic dysfunction in motor neurone disease.

By supporting my attendance at these conferences, and my visit to different laboratories, ESA/IPSEN have allowed for me to continue to refine my craft and to capitalise on my postdoc training. I would like to extend my sincerest thanks and appreciation to ESA and IPSSEN for their support, and for presenting me with the opportunity to ensure the ongoing success of my research career and goals.

Shyuan T Ngo

ESA/IPSEN TRAVEL AWARD REPORT:



Sarah To

With the generous support of the ESA IPSEN International travel award in 2012, I was able to travel to the Annual Meeting of the Japanese Cancer Association in Sapporo, Japan, September 19-21 2012.

I presented an oral communication detailing my research in to the epigenetic regulation of the prostanoid receptor EP2 in post-menopausal breast cancer, upstream of oestrogen biosynthesis. This work represented a strong collaboration between Prince Henry's Institute and the Department of Pathology at Tohoku University, Sendai, Japan, and as such was selected to be presented as part of an international scholars program.

The ESA/IPSEN travel award also enabled me to then travel to Sendai to enhance and reinforce the collaboration with Prof Hironobu Sasano and his research team at Tohoku University. During my visit to his laboratories, I presented a lecture to the Tohoku Medical Society detailing my work in to characterising the molecular mechanisms regulating oestrogen biosynthesis in breast cancer.

I would like to extend my thanks to ESA and IPSEN for the opportunity to travel abroad and immerse myself in the international scientific community.

Sarah To

IPSEN TRAVEL GRANT AWARD 2012



Dr Christopher Yates

I would like to thank the Endocrine Society of Australia and IPSEN for awarding me an international travel grant. With the award I was able to travel to the United States in June 2012 to present research at both the American Transplant Congress in Boston and the American Diabetes Association Scientific Sessions in Philadelphia, in addition to visiting Gary Scheiner from Integrated Diabetes Systems in Philadelphia.

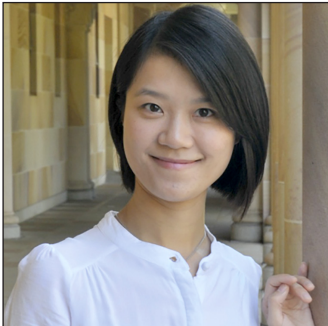
The research presented came from my doctoral studies into the relationship between prednisolone and glycaemia in renal transplant recipients using continuous glucose monitoring and the measurement of unbound prednisolone levels. I was awarded a

‘Poster of Distinction’ for my presentation at the American Transplant Congress. While in Philadelphia I also visited Gary Scheiner who has published books on intensive blood glucose control and advanced diabetes education for children and adults, and we discussed the use of continuous glucose monitoring and insulin pumps in the management steroid induced hyperglycaemia.

As a PhD student, an ESA-IPSEN Travel Grant provided me with an enormous opportunity to present my research, meet esteemed researchers and improve my clinical management. I am very grateful to the ESA and IPSEN for establishing this award. Once again thank you very much for your support.

Dr Christopher Yates

AWE TRAVEL AWARD 2012



Lili Huang

To provide financial support to younger women involved in Endocrine-related training and/or research

I would like to take this opportunity to express my gratefulness to The Endocrine Society of Australia (ESA) and Women in Endocrinology (WE) for the NovoNordisk Travel Award 2012. With this financial support, I was able to attend ENDO 94th annual meeting and Expo in Houston, 2012 during my third-year of PhD study. By attending this meeting, my abstract entitled “The post-pubertal decline in pulsatile GH secretion in mice is exacerbated by increased adiposity following high fat feeding” was awarded the outstanding abstract and I was fortunate to be selected to participate in the Presidential Poster Competition where I was awarded one of the Presidential Poster Competition Award winners. As a winner I had the privilege to present the data

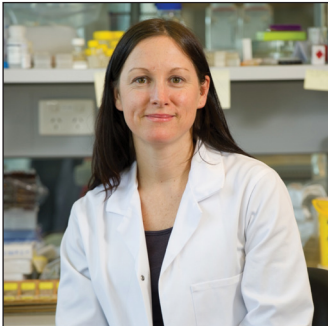
for a second time in the foyer in front of the plenary session grand ballroom. I feel extremely honored to show our work to the world's leading researchers and get the recognition and valuable feedback from them. Soon after the meeting, this work highlighting the fact that dietary induced weight gain speeds up the age-related decline of GH secretion has been published in *Endocrinology* (2012; 153, 4380-4388).

Besides showcasing our work, I also got the opportunity to attend lots of plenary and symposium sessions to learn the latest endocrine science presented by world leaders in the field. These informative lectures broadened my mind and would certainly have a significant effect on the selection of my future research direction of a post-doctoral training.

Once again, I am deeply appreciated for this valuable travel fund which assists me to travel to Houston for this great event in endocrine field. Also, I would like to take this opportunity to acknowledge my supervisors at The University of Queensland, Prof. Chen Chen and Dr. Frederik Steyn, for their strong support and help throughout my PhD study.

Lili Huang

AWE 2012 TRAVEL AWARD



Kara Britt

I am most grateful to the ESA for its AWE travel award that enabled me to attend the 94th US Endocrine Society meeting in Houston Texas in June 2012.

I was an invited speaker at the Hormones and Cancer symposium, by the Endocrine Society and these funds enabled me to attend the conference and present my work. The symposium included leaders in the fields of endocrinology and cancer research. During the symposium I presented my work assessing whether mouse mammary stem cells within parous mice are reduced by pregnancy, compared to nulliparous mice. Parity (childbearing) is a reproductive event that has a large impact on breast cancer risk. Women who bear children early can have an up to 70% decreased risk of cancer compared to nulliparous women.

The work I presented is part of my NBCF early career fellowship within which I am attempting to define which mammary cell type mediates protection. It was an amazing and valuable experience to present my data in such an international and specialized forum where I was able to receive constructive feedback on my work. At the Endocrine Society meeting itself I was able to meet with leaders in the field at the poster sessions to discuss the role of estrogen in mediating cancer risk. I also organized and met with my US collaborator Professor Ken Korach, NIEHS, to discuss our collaborative project whilst at the meeting. I would like to thank the Australian Women in Endocrinology for this opportunity as well as my supervisor and Head of Department at Monash University for their continued support throughout the project (Professors Gail Risbridger and John Bertram).

Kara Britt

MEDICAL AFFAIRS COMMITTEE

The Medical Affairs sub-committee currently comprises 3 clinical members of the ESA Council. The sub-committee has been invited to respond to an increasing numbers of requests for input into position statements and policy decisions from organisations such as the Pharmaceutical Benefits Advisory Committee, National Health Medical Research Council, Royal Australasian College of Physicians, Australian Medical Association, several overseas organizations and media.

The sub-committee has sought to manage these requirements through a variety of strategies including obtaining assistance from non-Council members of ESA with specific expertise in a particular area and has sought to attain closer ties with the Australian Diabetes Society to co-ordinate input into diabetes-related issues. Ashim Sinha has also been co-opted to the Medical affairs committee to increase the co-operation with ADS on diabetes related issues.

We would like to acknowledge the contributions of Ashim Sinha who has agreed to be a liaison between the ESA and Australian Diabetes Society and the contributions

of ESA members Amanda Vincent, Henry Burger, Bu Yeap, Mathis Grossman, Rob McLachlan, Duncan Topliss, John Walsh and Ken Ho to name a few, for their recent efforts. Refinement of these strategies to cope with a growing workload including a proposal to expand the Medical Affairs Committee outside council will be discussed at the upcoming ESA Council planning day in December.

One particular issue of controversy has been the new guidelines for gestational diabetes proposed by the International Diabetes in Pregnancy Study Group. The Medical Affairs Committee has undertaken a short web-based survey of ESA members to gauge their response to these guidelines. The survey is still open and can be accessed by members on the ESA website, we would welcome further responses from members. Member responses will be collated and will be fed back to the membership and appropriate organisations in due course.

Dr Morton Burt (Acting Head, Medical Affairs Subcommittee) on behalf of Prof Helena Teede (Head and Associate-Professor Warrick Inder

MEMBERS ACHIEVEMENTS



Ken Ho

Associate Editor, Australasia: Professor Ken Ho (University of Queensland and Princess Alexandra Hospital, Brisbane, Australia).

Research focus: Pituitary disorders, neuroendocrine regulation of substrate and energy metabolism, endocrinology of sports Clinical Endocrinology

Congratulations to Ken Ho who was appointed on the board of European Journal of Endocrinology

ESA PARTNERSHIPS

Clinical Endocrinology

ESA has partnered with the Journal Clinical Endocrinology, This will be our Society's journal. ESA members will have electronic access to this journal and will be able to get articles published. The editorial board can be expanded to include more Australian members.

Clinical Endocrinology publishes papers and reviews which focus on the clinical aspects of endocrinology, including the clinical application of molecular endocrinology. It does not publish papers relating directly to diabetes care and clinical management. It features reviews, original papers, commentaries, cases of the month, book reviews and letters to the editor. Clinical Endocrinology is essential reading not only for those engaged in endocrinological research but also for those involved primarily in clinical practice.

Vol 78 (12 Issues in 2013)

Edited by: J. S. Bevan, S. J. Judd and S. G. Ball
Print ISSN: 0300-0664
Online ISSN: 1365-2265

Published on behalf of Endocrine Society of Australia, Society for Endocrinology (SFE)

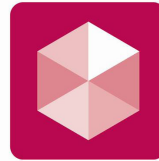
Website: <http://au.wiley.com/WileyCDA/WileyTitle/productCd-CEN.html>

ENDOCRINOLOGY, DIABETES & METABOLISM CASE REPORTS

ESA members benefit from ESA's recent collaboration with other leading societies worldwide and Bioscientifica, a not-for-profit subsidiary of the Society for Endocrinology.. Members of ESA are eligible for a special discounted publishing fee of just £100 (in 2013) when publishing case reports in the open access publication; Endocrinology, Diabetes & Metabolism Case Reports (submit online via www.edmcasereports.com)

Endocrinology, Diabetes & Metabolism Case Reports is a unique, open access resource that publishes and links together case reports, enabling practitioners to communicate findings, share knowledge and convey medical experiences efficiently and effectively; furthering both medical education and clinical practice. The search and browse functionality enables fluid navigation between case reports, facilitating discovery, connections and comparisons; making it the go-to resource across all the many disciplines intersecting with endocrinology, diabetes and metabolism.

Website: www.edmcasereports.com



Endocrinology,
Diabetes & Metabolism
CASE REPORTS

ESA 2014 MEETINGS

ESA Seminar Meeting 2014, 2-4 May, Hotel Grand Chancellor, Hobart, Tasmania



The 2014 ESA Seminar Meeting will be held from the 2nd -4th May at Hotel Grand Chancellor Hobart, Hobart, TAS. This year's ESA Seminar Meeting will featured both a Basic Science & Clinical stream.

The themes for the 2014 are:

Basic Science Stream **"Steroid Action: Biology & Clinical Disease"**

Clinical Stream **"Adrenal Disease"**

Professor William Young Jr will contribute to both the Clinical and Science streams.

Website: <http://www.esaseminar.org.au/>

Don McLeod (Clinical Chair) and Belinda Henry (Basic Science Chair).

ESA 2014 MEETINGS

EESA Clinical Weekend 2014, 23-25 August, Peppers The Sands, Torquay, Victoria



The Organising Committee have pleasure in welcoming clinical endocrinologists and trainees to the Clinical Weekend. The program will follow the successful format of previous years, featuring the presentation of high quality clinical cases by Advanced Trainees in an interactive small group setting. The focus of this year's meeting will be in the areas of thyroid and pituitary endocrinology. Advanced trainees are invited to submit case studies for consideration in to the program.

Convenor: A/Professor Shane Hamblin

ESA 2014 MEETINGS

ESA/SRB ASM 2014, 25-28 August, Melbourne Convention Centre

The Annual Scientific Meeting of the Endocrine Society of Australia and the Society for Reproductive Biology



24th - 27th August, 2014

Melbourne Convention & Exhibition Centre, VIC



The 2014 ESA-SRB Annual Scientific Meeting will be held in Melbourne at the Melbourne Convention & Exhibition Centre from 25th-28th August 2014. Planning for the meeting is in full swing with some exciting international and national speakers in mind. The program is guaranteed to build on the strengths of previous meetings.

The Program Organising Committees are:

Dr Ann McCormack (Chair - ESA)

Dr Kaye Stenvers (Chair – SRB)

A/Professor Chris Ormandy

A/Professor Rory Clifton-Bligh

Dr Sue Mei Lau

Dr Paul Baldock

The Local Organising Committee are:

Dr Mathis Grossman (Chair – ESA)

Dr Kirsty Walters (Chair – SRB)

Awards for this meeting are:

ESA Awards (presented at the ASM):

ESA Senior Plenary Award

ESA Mid-Career Research Award

ESA-Novartis Junior Scientist Award

Servier Young Investigator Award

Bryan Hudson-Mayne Pharma Clinical

Endocrinology Award

ESA Travel Grants:

ESA / IPSEN International Travel Grants

WE / ESA Australian Women in Endocrinology (AWE) Travel Awards

ESA Travel Grants to attend the ASM

Look forward to seeing you in Melbourne!

Ann McCormack

ESA NEW LOGO AND WEBSITE



The ESA new logo was ratified at the Annual General Meeting of ESA in 2013.

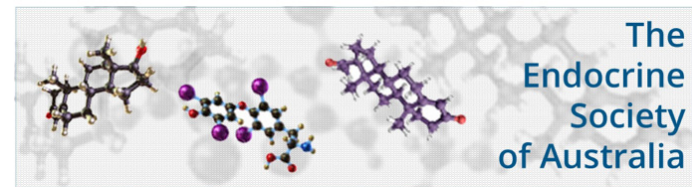
THE ESA WEBSITE HAS A NEW FRESH LOOK!

In 2013 ESA announced the launch of our new and improved society website.

With improvements throughout, the new ESA website is designed with a fresh innovative appearance and is easier to navigate to find exactly what you want.

Click: <http://www.endocrinesociety.org.au/> to see all the new user friendly updates. Easily find upcoming meeting information, view newsletters, pay online for your subscription dues and apply for the many awards and grants of the society. Check out the resources section which includes: trainee information and position statements.

All members are encouraged to view the new ESA website. We will be adding further content and encourage members to send any feedback and suggestions on how we can improve the new website even further.



About Us

The Endocrine Society of Australia (ESA) is a national non-profit organisation of scientists and clinicians who conduct research and practice in the field of Endocrinology.
The society was founded in 1958 and incorporated in 1986 in the State of Victoria. The Society is governed by the eight members of its Council who are elected every two years by a ballot of the membership in accordance with the constitution.

Member Login

Username

Password

[Forgotten Password](#)

Strategic Plan

ESA Council members met in November 2011 to devise a strategic plan for the society. It is open for comment from members and please direct any comments to the Secretariat.
Council members have devised a plan to meet these objectives over the next 3 years and we are hoping to engage expert members of ESA to assist in meeting these objectives.
[Read the strategic plan.](#)

MINUTES FOR ENDOCRINE SOCIETY OF AUSTRALIA

ANNUAL GENERAL MEETING SYDNEY CONVENTION CENTRE

Bayside Auditorium A

TUESDAY 27th August 2013
5.00-6.00pm

Attendance:

Peter Ebeling, Warrick Inder, Helena Teede, Vicki Clifton, Chen Chen, Iain Clarke, Kathy Gatford, Craig Harrison, Simon Chu, Ray Rodgers, Rosemary Wong, Bev Muhlhausler, Errol Wilmshurst, Mathis Grossman, Peter Davoren, Andrew Lang, Shaun McGrath, Emma Duncan, Trisha O'Moore-Sullivan, Duncan Topliss, Jeffrey Zajac, Morton Burt, Ann McCormack, Belinda Henry, Renea Taylor, Jonathan Taft, Leon Bach, Bu Yeap, Ken Ho, Peter Fuller, Mark Cooper, Paul Williams

1. Apologies

Nicolette Hodyl, Tim Cole, Kelly Loffler, Don Perry-Keene, Dennis Wilson, Ashim Sinha, Brian Hirschfeld

2. Confirmation of Minutes – 28th August 2012, Gold Coast Convention Centre

Minutes of the Annual General Meeting that was held on 28th August 2012 were accepted as a true and accurate record. Proposed by Leon Bach and seconded by Ken Ho.

3. Business Arising

4. President's Report

The ESA council has had a productive year. ESA have launched its new website and logo. ESA has partnered with the the Journal of Clinical Endocrinology. This will be our Society's journal. ESA members will have electronic access to this journal and will be able to get articles published. . The editorial board can be expanded to include more Australian members. ESA also partnered with Bioscientifica, a not-for-profit subsidiary of the Society for Endocrinology. Warrick Inder will be on the editorial board.

Peter is on the programme organising committee for the ICE/ENDO 2014 meeting to be held in Chicago from June 21-24, 2014. ESA Council will consider who to put forward as possible plenary and symposium speakers.

Membership discussed this item suggestion include: ESA to send email to members to urge them to vote for Australian representative for the POC of ICE/ENDO. ESA members should be volunteered to other committees of the Endocrine Society to enable them to then go on the POC.

Bu Yeap and Rob McLachlan came up with an independent response to DUSC on androgen replacement and this was submitted. The working group will come up with a position statement.

Peter thanked Ken Ho for his support in the medial release on Peptides in sport. There was also two media release's on prominent abstracts from this meeting.

5. Treasurer's Report

Revenue increased by 54%, but this was due to a large bequest of \$528,215 from the estate of former life member Ken Wynne. Income from membership subscriptions was fell significantly by 16.6% from \$80,765 to \$67,324. Proceeds from meetings were down 17.3% compared to 2011-2012. The combined scientific meeting is less profitable when combined with SRB compared to APEG, largely due to differences in pharmaceutical company revenue, while the addition of a basic science stream to the seminar meeting and funding of an overseas speaker for this meeting has markedly reduced profits but broadened the applicability to members and strengthened the science.

The funds managed by Asgard have returned a net increase in value for the financial year from \$706,646.25 (July 1, 2012) to \$808,577.76 (June 30, 2013). As of August 19, 2013, there has been a

further increase in value to \$838,392.96. Funds from the Wynne estate have been invested in a separate account with Asgard. This is structured conservatively at 30% cash/fixed interest and 70% growth assets. As of August 19 2013, the value of this investment is \$541,320.29. Our aim is to make at least a 5% return on this investment annually which will fund a \$25,000 scholarship annually without encroaching on the principal.

Expenditure was higher in 2012-13 compared to the previous financial year by 3.8%. Meeting costs were less, but award costs higher. Secretariat costs have risen and we are now paying rent to the RACP for premises, shared with ADS and ANZBMS.

We are again offering one research higher degree scholarship (value \$20,500) and one post-doctoral award (value \$25,000) for 2014. Applications close on October 31st 2013. The awards are for one year at the recommendation of the Finance sub-committee. In addition, we are offering a \$25,000 Ken Wynne Memorial Scholarship – details to follow.

Progress has been made on the ESA / APEG proposal to the PBAC regarding the funding of growth hormone for adults with proven GH deficiency. A full literature review has been undertaken and the committee feels there is sufficient evidence of benefit to proceed with an application. A meeting with the relevant Pharmaceutical companies has been arranged for Monday August 26th. Cost effectiveness analysis is required before any formal submission is undertaken. A total of \$3511 was spent by ESA in the last financial year towards this.

Overall therefore the Society posted a net profit of \$554,795, but allowing for income received from the Wynne estate, operating profit was \$26,580. Our total net assets have increased from \$1,208,324 to \$1,858,300.

5.1 Audited Accounts

Approval for the Audited accounts was CARRIED by members.

6. Medical Affairs Report

Increasing demands on ESA

Roles include

- To develop positions statements
- Reports to government, PBAC/ TGA requests for advice
- Both national and international requests
- Need to respond to issues of day- engage with other societies/ media etc

Strategies to optimise ability to respond – joint member, Ashim Sinha agreed to be a liaison between the Societies.

As per the recent ESA Manual Med affairs committee has 3 Council members and then can co-opt as needed and like to acknowledge contributions of Amanda Vincent, Henry Burger, Bu Yeap, Mathis Grossman, Rob McLachlan and John Walsh, Ken Ho to name a few, for their recent efforts.

Med affairs also addressing controversial areas including where members express concerns such as with the recent proposed GDM diagnostic criteria, where member input is sought to inform the ESA position. Proposals for expansion of Medical Affairs outside council will be considered at the face to face ESA planning meeting in November.

6.1 RACP-College Advanced Training Committee

The Advanced Training Committee (ATC, formerly known as Specialist Advisory Committee) meets twice a year and has frequent email contact during the year. As well as accrediting sites and trainees, the ATC has a number of roles in the development of clinical endocrinology training in Australia. In line with changes in the RACP, there are several developments that have recently occurred or may be introduced in the coming years:

1. There is now a formal endocrinology curriculum. Details regarding the curriculum and training requirements for 2014 are available on line at <http://www.racp.edu.au/index.cfm?objectid=4C8841BD-BDB7-E882-618E1C3CFEEEE3B0>
2. Where a trainee is undergoing specialist endocrinology training only (ie not in a joint training program), at least one year of core endocrinology training must be completed before non-core

training will be allowed. Therefore in the future, doing a year of general medicine while awaiting an endocrine training position will not be accredited towards advanced training.

3. Retrospective accreditation of earlier years done for example in general medicine/endocrinology not initially prospectively approved for endocrinology training will no longer be considered
4. Consideration is being given to an exit examination (written only). This is also being considered by other sub-specialties. We recognise that some trainees may require a third year of clinical training, while many get to the required level after 2 years. An exit examination would ensure a minimum knowledge requirement before gaining the fellowship, and if done during the second year, would stream those who fail into a third year of core clinical training, while those who pass would be allowed an elective year.
5. We are examining methods of ensuring adequate breadth and depth of training, including a review of whether the current RCY/core jobs should all be considered “core” training, if log books to document experience are necessary and having a combination of 2 year blocks so that a first year trainee would have both core years planned out and ensure complementary exposure, experience in regional and metropolitan areas (and enable high quality trainees for the regional areas).
6. Supervisor workshop coming in 2014

The ATC welcomes feedback from members of the special societies regarding these and other training issues. The ATC is made up of members from ESA, ADS, ANZBMS and APEG. If you have feedback please contact your ESA representatives:

Warrick Inder: warrick_inder@health.qld.gov.au

or

Vivian Grill: viviangrill@ozemail.com.au

7. Report on 2013 ESA Meetings • Seminars • Clinical weekend • ASM

The 2013 Seminar, Clinical weekend and ASM have shown near record numbers of registrants and were very successful.

8. Future Meetings

ESA Seminar Meeting 2014, 2-4 May, Hotel Grand Chancellor, Hobart, Tasmania

ESA Clinical Weekend 2014, 23-25 August, Victoria

ESA/SRB ASM 2014, 25-28 August, Melbourne Convention Centre

9. Other business

9.1 ESA Logo

Approval for the new ESA logo was CARRIED by members.

ICE 2018 – Cape Town, South Africa 1st - 4th December 2018

Leon stated that ESA need to put forward strong candidates for this meeting.

10. Date of next meeting: Melbourne, 27th August 2014



SECRETARIAT

145 Macquarie Street

Sydney, NSW, 2000.

Ph: +61 2 9256 5405

Fax: +61 2 9251 8174

Email: ijohnson@endocrinesociety.org.au

Office hours: 10.00am – 4.00pm

Tuesday, Thursday and Friday